

Switch™ 3D Gun Mounting Kit

3A8066D

EN

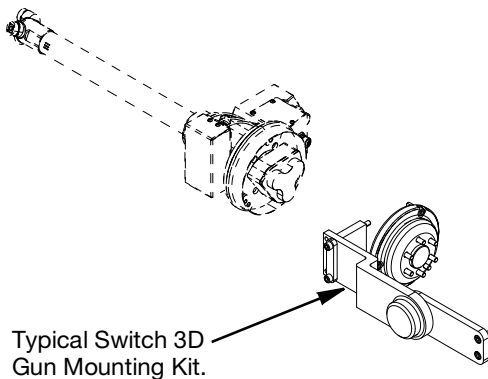
Kit to mount a Switch 3D Gun to an ABB robot. For professional use only.

See Kits Numbers for applications of this manual.

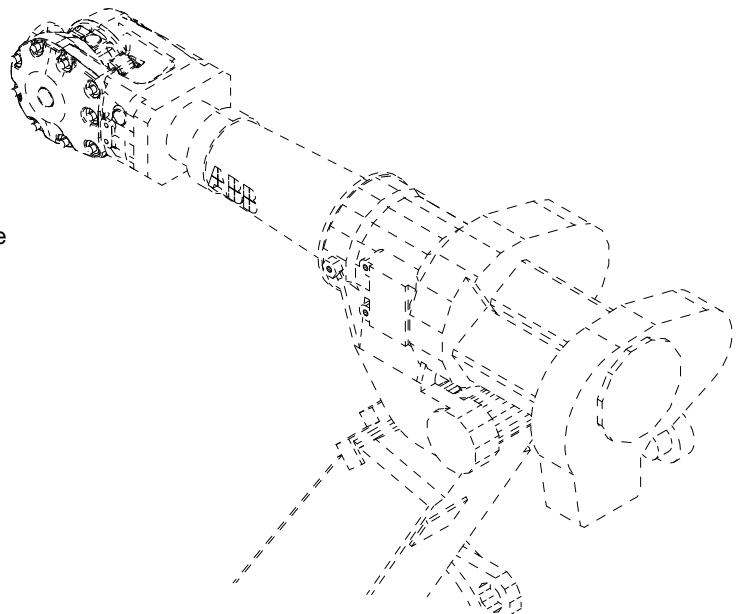


Important Safety Instructions

For complete warnings, refer to the Switch 3D Gun manual 3A8004 and 3A8476.



Note: Switch 3D Gun and robot shown for reference only and are not included with kit.



Contents

Related Manuals	2	14
Kits	3	Parts for ABB Robot Mounting Installation Kit, 25T598	15
SST Switch 3D Gun Installation for 25U342 Yaskawa Motoman 20 Kg. Robot	4	Calibration Kit for ABB Robot 26D485	16
Parts for Yaskawa Motoman 20 Kg. Robot Mounting Installation Kit, 25U342.	5	Parts for Calibration Kit for ABB Robot 26D485	17
SST Switch 3D Gun Installation for 25U343 Fanuc M710iC 20 Kg. Robot.	6	SST Switch 3D Gun Installation for Kawasaki RS010N 10 kg. Robot, 26D453.	18
Parts for Fanuc M710iC 20 Kg. Mounting Installation Kit, 25U343.	7	Parts for Kawasaki RS010N 10 Kg Robot Mounting Installation Kit, 26D453	19
SST Switch 3D Gun Installation for 25U344 Yaskawa Motoman 50 Kg. Robot.	8	Calibration Kit for Kawasaki 10 kg Robot 26D48620	21
Parts for Yaskawa Motoman 50 Kg. Robot Mounting Installation Kit, 25U344.	9	Parts for Calibration Kit for Kawasaki 10 kg 26D486	21
SST Switch 3D Gun Installation for 25U345 Fanuc M710iC 50 Kg. Robot.	10	SST Switch 3D Gun Installation for Kawasaki RS020N 20 kg. Robot, 26D454.	22
Parts for Fanuc M710iC 50 Kg. Robot Mounting Installation Kit, 25U345.	11	Parts for Kawasaki RS020N 20 Kg Robot Mounting Installation Kit, 26D454	23
SST Switch 3D Gun Installation for 25U455 ABB Robot.	12	Calibration Kit for 20 kg Kawasaki Robot 26D49124	25
Parts for ABB Mounting Installation Kit, 25U455.	13	Parts for Calibration Kit for 20 kg Kawasaki 26D491	25
Switch 3D Gun Installation for ABB Robot 25T598		Recycling and Disposal	27
		End of Product Life.	27
		Technical Specifications	27
		California Proposition 65	27
		Graco Standard Warranty.	28

Related Manuals

Manual in English	Description
3A8004	(Aluminum) Switch 3D Gun
3A8476	SST Switch 3D Gun

Kits

Kit No.	Robot Manufacture	Robot Models	For Use on Switch 3D Guns	Calibration Kit
25U342	Yaskawa	Motoman 20 Kg	All	None
25U343	Fanuc	M710iC 20 Kg	All	None
25U344	Yaskawa	Motoman 50 K	All	None
25U345	Fanuc	M710iC 20 Kg	All	None
25U455	ABB	IRB 2400 10/16, IRB 2600 12/20, IRB 4400 L10, IRB 4600 20	All	26D485
25T598	ABB	IRB 2400 10/16, IRB 2600 12/20, IRB 4400 L10, IRB 4600 20	Aluminum guns only: 17V558, 17V559, 17V561, 17V562, 17V563. 17V564, 17V565 and 17V567	26D485
26D453	Kawasaki	RS2006L, RA006L, RS2010N, RA010N	All	26D486
26D454	Kawasaki	RS020N, RA020N	All	26D491

NOTE: The details shown in this Switch 3D Gun mounting kit manual are only for the mounting kit parts and installation. For information regarding the Switch 3D Gun including warnings, maintenance, repair, operation, trouble shooting or parts, please refer to the (Aluminum) Switch 3D Gun manual 3A8004 or SST Switch 3D Gun manual 3A8476.

SST Switch 3D Gun Installation for 25U342 Yaskawa Motoman 20 Kg. Robot

Mounting Adapter and SST Switch 3D Gun

1. Attach the Yaskawa 20KG adapter (101) onto the sixth axis of the robot with the six valve screws (102) and six flat washers (112). Torque to 23 in-lb/2.6 N•m.
2. Attach the body of the Switch 3D Gun to the Yaskawa 20KG adapter (101) using the three M6 x 25 screws (103) and three plain washers (104). Torque to 98.2 in-lbs (11.1 N•m).

2. Attach, but do not tighten the Yaskawa 20KG yoke (105), to the anti-rotation bar (110) around the cylindrical mounting surface of the robot using two M6 x 25 SHCS screws (103) and two plain washers (104).
3. Attach, but do not tighten the Yaskawa 20KG clamp (106), to the Yaskawa 20KG yoke (105) using two M6 x 50 SHCS screws (107) and two plain washers (104).
4. Orient the SST switch 3D gun so that the material hose and control cable route down the side of the robot. Damage can result from routing the material hose and control cable over the top of the robot.
5. Gradually tighten all the screws (103, 107, 109) to allow the assembly to align in a natural position . Torque to 98.2 in-lbs (11.1 N•m).

Anti-Rotation Brackets

1. Attach, but do not tighten the anti-rotation block (111), anti-rotation bar (110) and washer plate (108) using two M6 x 70 SHCS screws (109).

Note: SST Switch 3D Gun and robot shown for reference only and are not included with kit.

- △1 Torque to 23 in-lb/2.6 N•m
- △2 Torque to 98.2 in-lb/11.1 N•m
- △3 Anaerobic adhesive

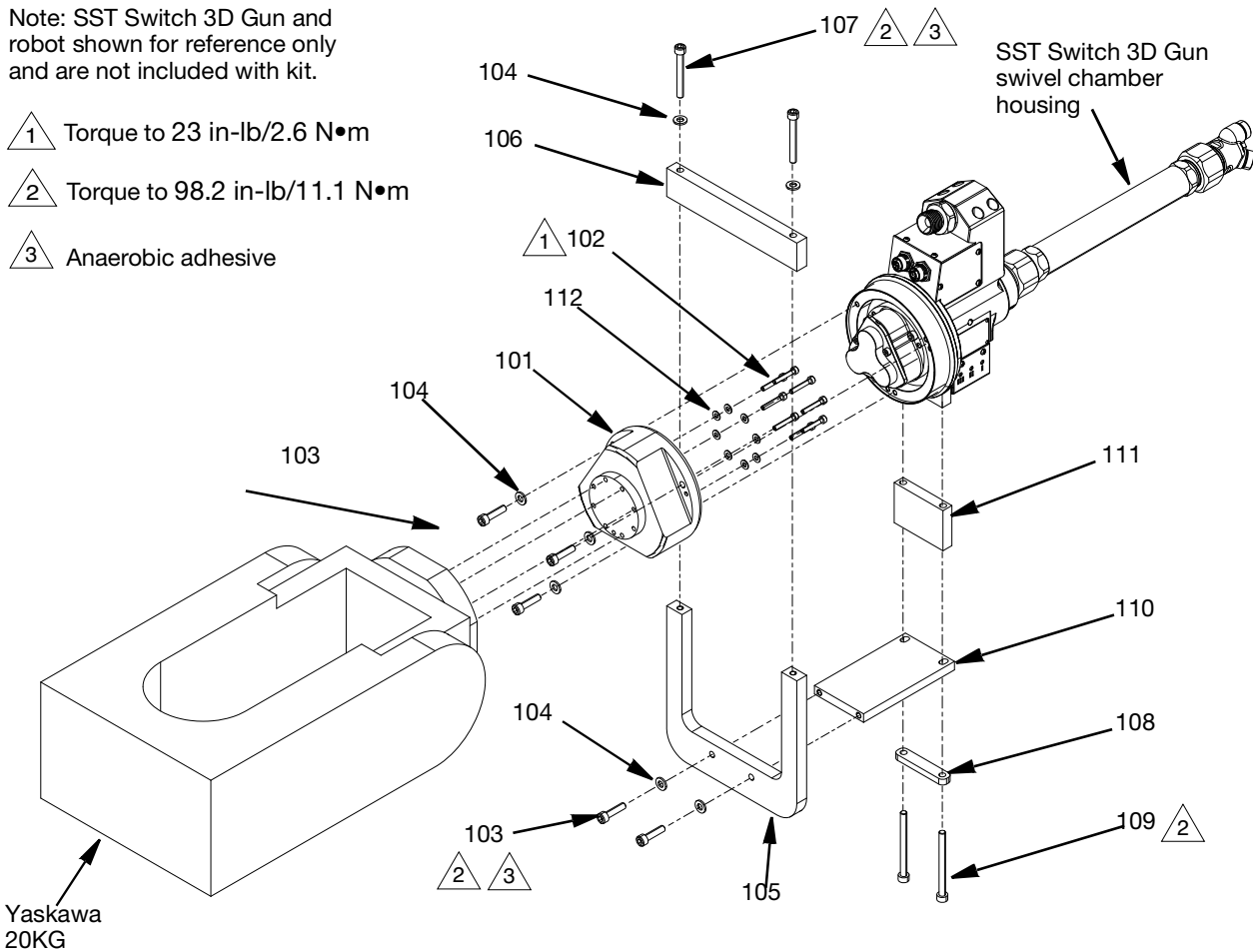
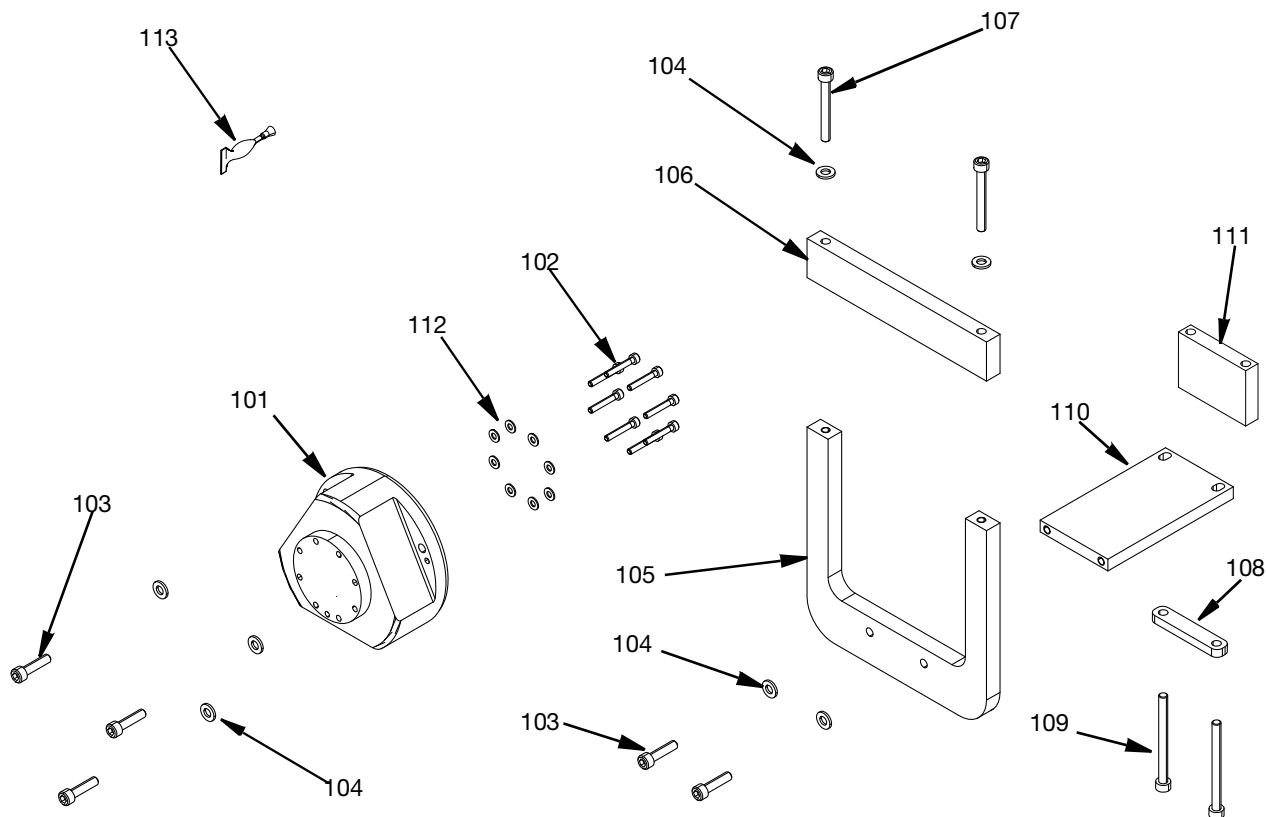


FIG. 1

Parts for Yaskawa Motoman 20 Kg. Robot Mounting Installation Kit, 25U342.



Yaskawa Motoman 20 Kg. Mounting Installation Kit, 25U342 Parts List

Ref.	Part	Description	Qty.
101	25U407	ADAPTER, yaskawa 20KG	1
102	111119	SCREW, valve	8
103	117029	SCREW, schs, M6 x 25	5
104	105314	WASHER, plain	7
105	15N321	YOKE, yaskawa, 20KG	1
106	15N322	CLAMP, yaskawa 20KG	1
107	117079	SCREW, SCHS M6 x 50	2
108	15N354	PLATE, washer	1
109	117083	SCREW, schs, M6 x 70	2
110	15N130	BAR, anti-rotation	1
111	15N129	BLOCK, anti-rotation	1
112	110918	WASHER, flat	8
113	113500	ADHESIVE, anaerobic	1

SST Switch 3D Gun Installation for 25U343 Fanuc M710iC 20 Kg. Robot.

Mounting Adapter and SST Switch 3D Gun

1. Attach the Fanuc 20KG adapter (211) onto the sixth axis of the robot with the four M6 x 25 screws (203) and four plain washers (201). Torque to 98.2 in-lb/11.1 N•m.
2. Attach the body of the SST Switch 3D Gun to the Fanuc 20KG adapter (211) to the using the three M6 x 25 screws (203) and three plain washers (201). Torque to 98.2 in-lbs (11.1 N•m).

Anti-Rotation Brackets

1. Attach, but do not tighten the anti-rotation block (206), anti-rotation bar (207) and washer plate (210) using two M6 x 70 SHCS screws (205).
2. Assemble, but do not tighten the Fanuc 20 KG. yoke (208) and fanuc 20 KG. clamp (209) around

the cylindrical mounting surface of the robot using the two M6 x 50 screws (204) and two plain washers (201).

3. Align the Fanuc 20 KG. yoke (208) with the anti-rotation bar (207) and assemble but do not tighten using two M6 x 25 screws (203) with two plain washers (201).
4. Orient the SST switch 3D gun so that the material hose and control cable route down the side of the robot. Damage can result from routing the material hose and control cable over the top of the robot.
5. Gradually tighten all the screws (203, 204, 205) to allow the assembly to align in a natural position . Torque to 98.2 in-lbs (11.1 N•m).

Note: SST Switch 3D Gun and robot shown for reference only and are not included with kit.

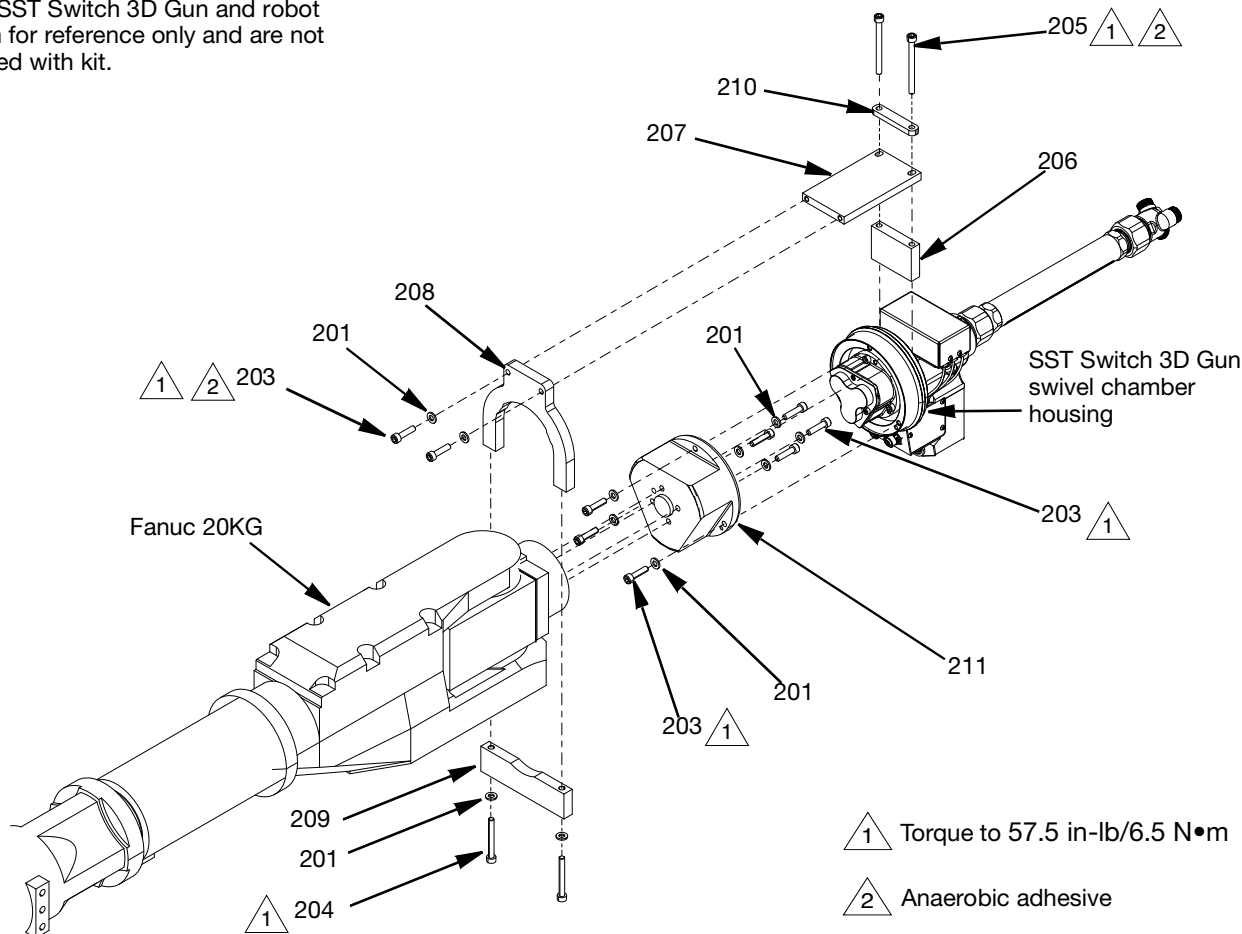
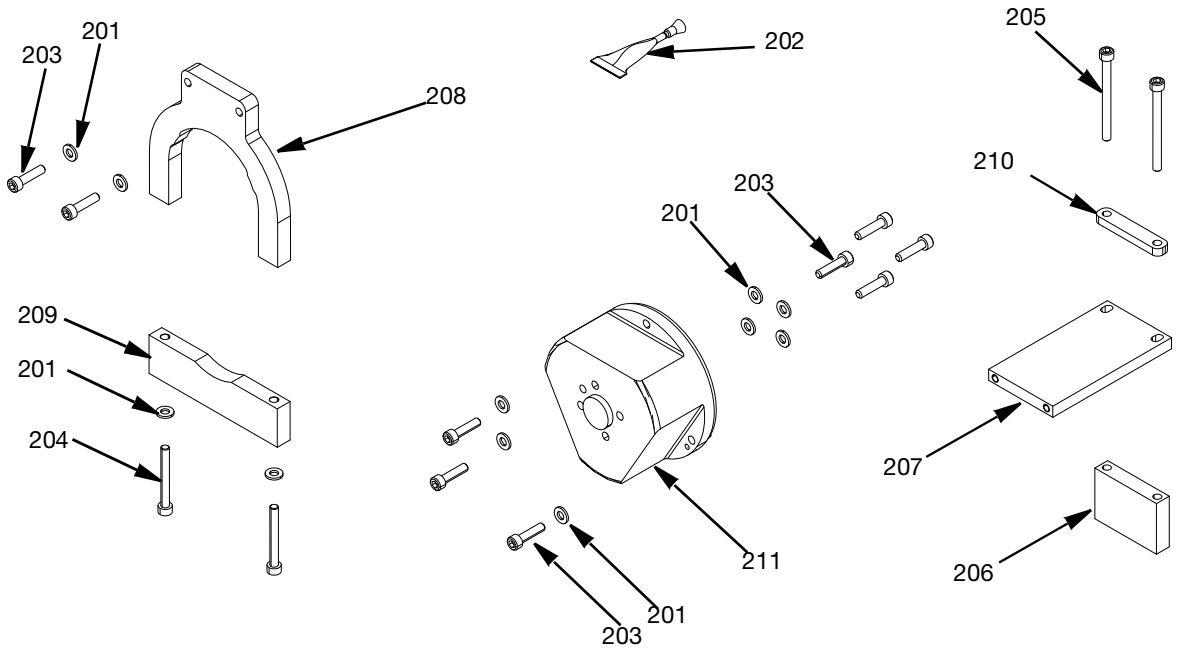


FIG. 2

Parts for Fanuc M710iC 20 Kg. Mounting Installation Kit, 25U343.



Fanuc M710iC 710lc20 Kg. Mounting Installation Kit, 25U343 Parts List

Ref.	Part	Description	Qty.
201	105314	WASHER, plain	11
202	113500	ADHESIVE, anaerobic	1
203	117029	SCREW, SHCS, M6 x 25	9
204	117079	SCREW, SHCS, M6 x 50	2
205	117083	SCREW, SHCS, M6 x 70	2
206	15N129	BLOCK, anti-rotation	1
207	15N130	BAR, anti-rotation	1
208	15N319	YOKE, fanuc, 20KG	1
209	15N320	CLAMP, fanuc, 20KG	1
210	15N354	PLATE, washer	1
211	25U408	ADAPTER, fanuc 20 KG, assy	1

SST Switch 3D Gun Installation for 25U344 Yaskawa Motoman 50 Kg. Robot.

Mounting Adapter and SST Switch 3D Gun

1. Attach the Yaskawa 50KG adapter (305) onto the sixth axis of the robot with the six screws (309) and six plain washers (308). Torque to 23 in-lb/2.6 N•m.
2. Attach the body of the SST Switch 3D Gun to the Yaskawa 50KG adapter (305) using the three M6 x 25 screws (307) and three plain washers (306). Torque to 98.2 in-lbs (11.1 N•m).

2. Attach, but do not tighten the Yaskawa 50KG yoke (302), to the anti-rotation bar (303) using two M6 x 25 SHCS screws (307) and two plain washers (306).
3. Attach, but do not tighten the Yaskawa 50KG clamp (301), to the Yaskawa 50KG yoke (302) around the cylindrical mounting surface of the robot using two M6 x 50 SHCS screws (312) and two plain washers (306).
4. Orient the SST switch 3D gun so that the material hose and control cable route down the side of the robot. Damage can result from routing the material hose and control cable over the top of the robot.
5. Gradually tighten all the screws (307, 311, 312) to allow the assembly to align in a natural position. Torque to 98.2 in-lbs (11.1 N•m).

Anti-Rotation Brackets

1. Attach, but do not tighten the anti-rotation block (304), anti-rotation bar (303) and washer plate (310) using two M6 x 70 SHCS screws (311).

Note: SST Switch 3D Gun and robot shown for reference only and are not included with kit.

1 Torque to 98.2 in-lb/11.1 N•m

2 Anaerobic adhesive

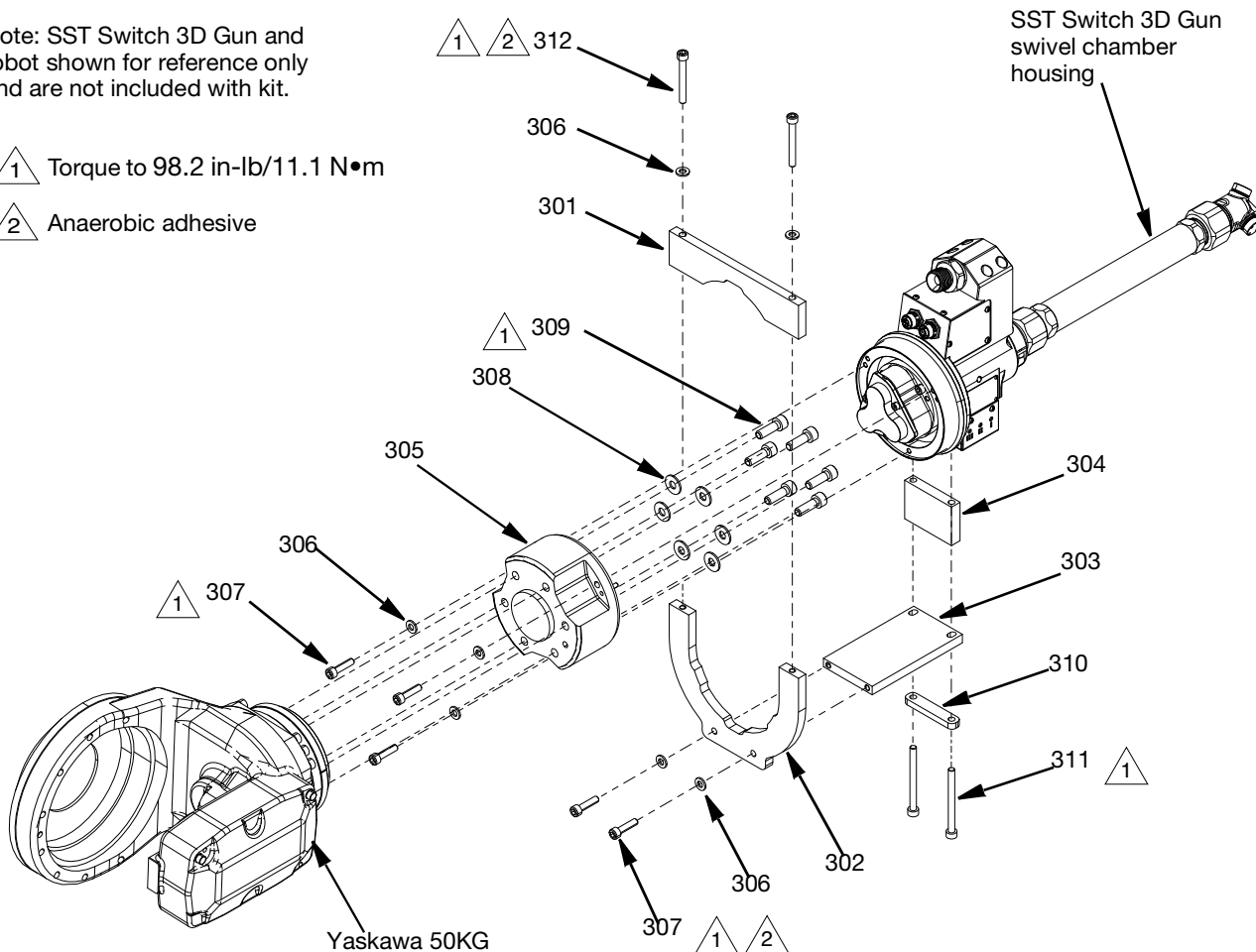
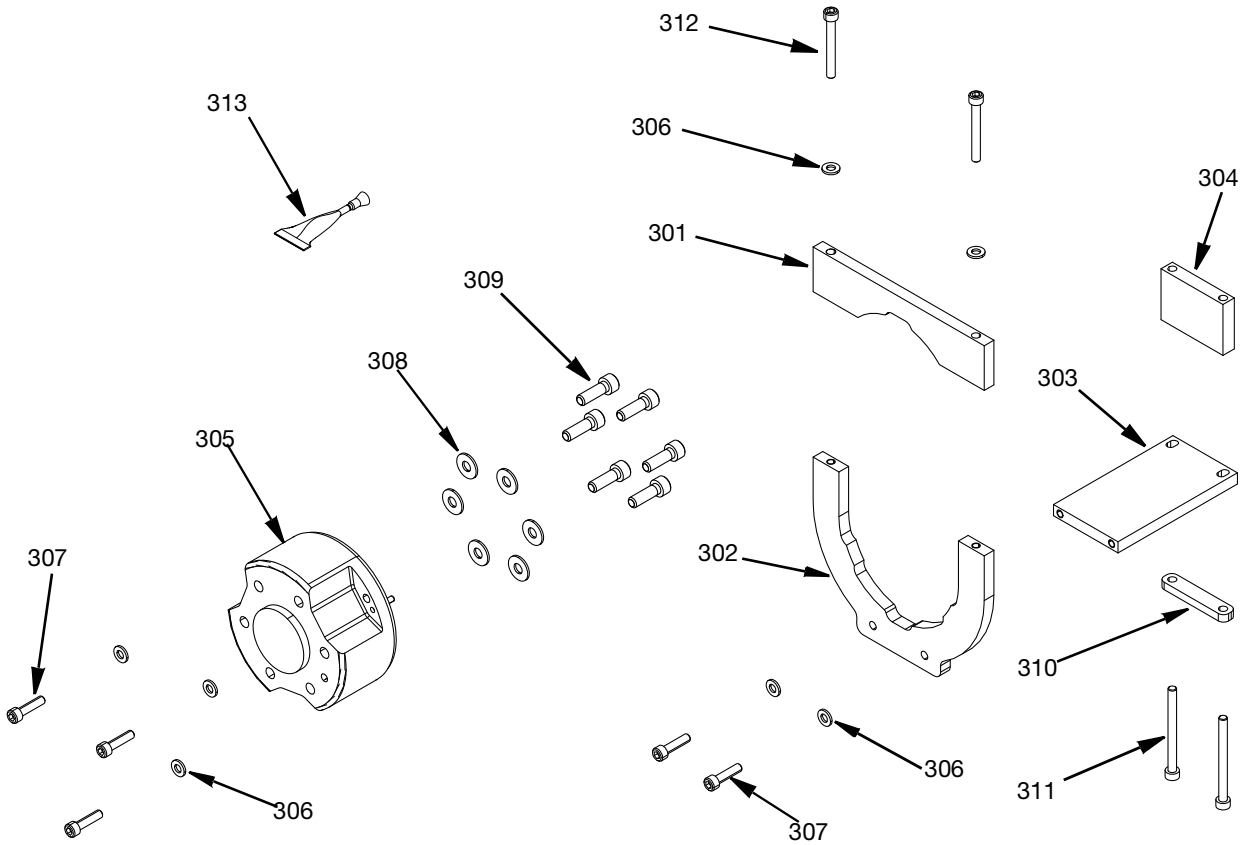


FIG. 3

Parts for Yaskawa Motoman 50 Kg. Robot Mounting Installation Kit, 25U344.



Yaskawa Motoman 50 Kg. Mounting Installation Kit, 25U344 Parts List

Ref.	Part	Description	Qty.
301	15N353	CLAMP, yaskawa, 50KG	1
302	15N352	YOKE, yaskawa 50KG	1
303	15N130	BAR, anti-rotation	1
304	15N129	BLOCK, anti-rotation	1
305	25U405	ADAPTER, yaskawa 50KG	1
306	105314	WASHER, plain	7
307	117029	SCREW, schs, M6x25	5
308	555626	WASHER, plain 5/16 ID x 3/4 OD	6
309	120913	SCREW	6
310	15N354	PLATE, washer	1
311	117083	SCREW, schs, M6 x 70	2
312	117079	SCREW, shcs, M6 x 50	2
313	113500	ADHESIVE, anaerobic	1

SST Switch 3D Gun Installation for 25U345 Fanuc M710iC 50 Kg. Robot.

Mounting Adapter and SST Switch 3D Gun

1. Attach the Fanuc 50 KG. plate (402) onto the sixth axis of the robot with the four M8 x 60 screws (410) with four lock washers (412) and the four spacers (403) between the adapter and robot mounting. The notch in the Fanuc 50 KG. plate is aligned with the top of the robot. Align the square corners of the Fanuc 50 KG. adapter with the square corners of the robot. Torque to 98.2 in-lb/11.1 N•m.
2. Attach the Fanuc 20KG adapter (401) onto the sixth axis of the robot with the three M8 x 25 screws (411). Torque to 350 in-lb/39.5 N•m.
3. Attach the body of the SST Switch 3D Gun to the Fanuc 50KG adapter (401) using the three cap screws (408) and three plain washers (407). Torque to 98.2 in-lbs (11.1 N•m).

using two M6 x 70 SHCS screws (409) with two plain washers (407).

2. Align the Fanuc 50 KG. plate (402) with the anti-rotation bar (404) and assemble but do not tighten using two cap screws (408) with two plain washers (407).
3. Orient the SST switch 3D gun so that the material hose and control cable route down the side of the robot. Damage can result from routing the material hose and control cable over the top of the robot.
4. Gradually tighten the screws (408, 409) to allow the assembly to align in a natural position. Torque to 98.2 in-lbs (11.1 N•m).

Anti-Rotation Brackets

1. Attach, but do not tighten the anti-rotation block (405), anti-rotation bar (404) and washer plate (406)

Note: SST Switch 3D Gun and robot shown for reference only and are not included with kit.

1 Torque to 98.2 in-lb/11.1 N•m

2 Torque to 350 in-lb/39.5 N•m

3 Anaerobic adhesive

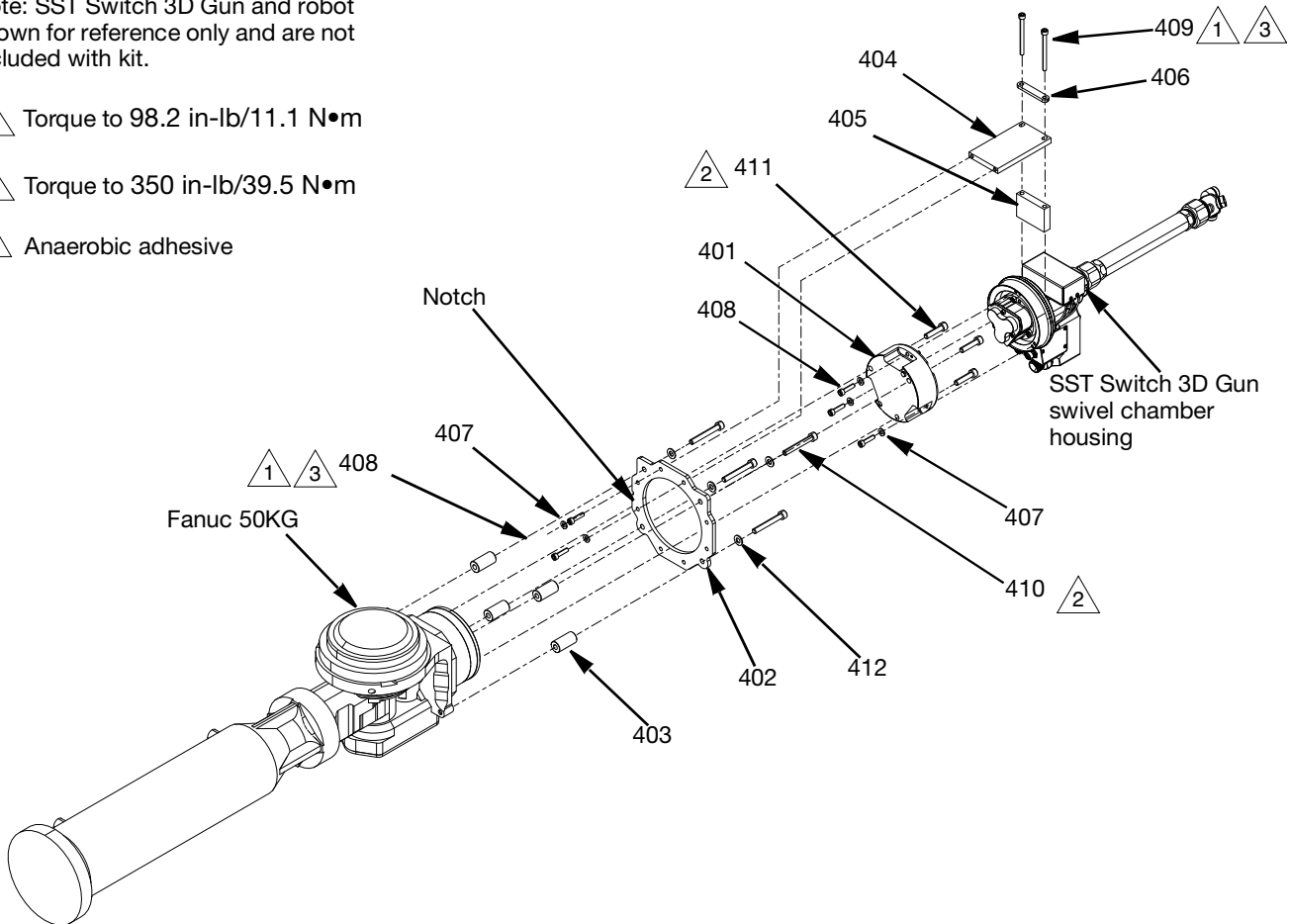
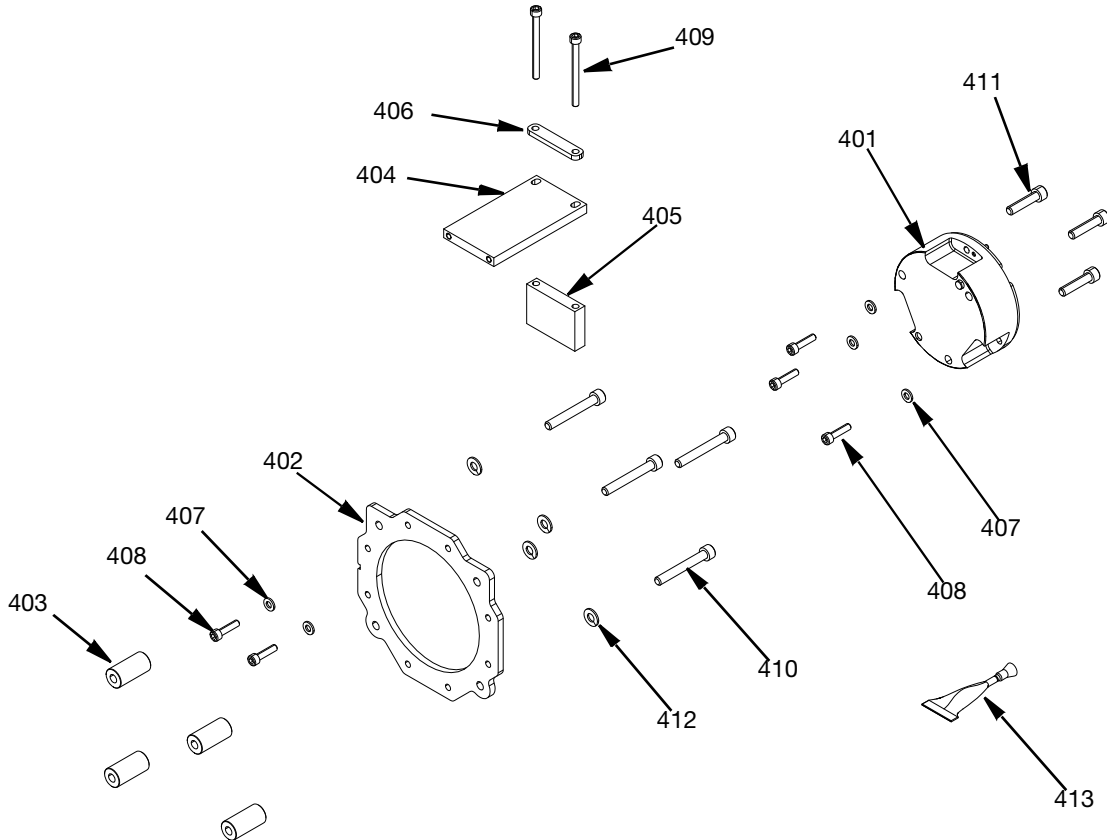


FIG. 4

Parts for Fanuc M710iC 50 Kg. Robot Mounting Installation Kit, 25U345.



Fanuc M710iC50 Kg. Mounting Installation Kit, 25U345 Parts List

Ref.	Part	Description	Qty.
401	25U406	ADAPTER, Fanuc, 50 KG , assy	1
402	15N128	PLATE, Fanuc, 50 KG	1
403	15N131	SPACER, 0.32 ID x 0.75 OD x 1.5 LG, AL	4
404	15N130	BAR, anti-rotation	1
405	15N129	BLOCK, anti-rotation	1
406	15N354	PLATE, washer	1
407	105314	WASHER, plain	5
408	117029	SCREW, cap	5
409	117083	SCREW, SHCS, M6 x 70	2
410	117080	SCREW, SHCS, M8 x 60	4
411	117354	SCREW, SHCS, M8 x 35	3
412	104572	WASHER, lock m8	4
413	113500	ADHESIVE, anaerobic	1

SST Switch 3D Gun Installation for 25U455 ABB Robot

NOTE: This kit can be used for both the SST Switch 3D Gun and the (Aluminum) Switch 3d Gun. See **Kits** table page 3.

Mounting Flange

1. Attach the ABB adapter assy (507) onto the sixth axis of the robot with the six M6 x 12 screws (505). Torque to 98.2 in-lb/11.1 N•m.
2. Attach the body of the SST Switch 3D Gun to the ABB adapter assy (507) using the three M6 x 20 hex socket screws (502) and three plain washers (501). Torque to 98.2 in-lbs (11.1 N•m).

Anti-Rotation Brackets

1. Follow the instructions from **Calibration Kit for ABB Robot 26D485** on page 16 to install ABB robot bracket (509) and SCH cap screws (504).
2. Assemble the anti-rotation block (506), ABB gun bracket (508), and washer bar (510) to the SST switch 3D gun, using two M6 x 60 screws(503). Do not tighten the screws.
3. Line up the trunnion of the ABB robot bracket (509), with the bearing of the ABB gun bracket (508) and fit together lining up the fixation points of the assembly.
4. Tighten the two M6 x 60 screws (503) gradually to allow the assembly to find a relaxed position. Then torque to 57.5 in-lb/6.5 N•m.

Note: SST Switch 3D Gun and robot shown for reference only and are not included with kit.

- 1 Torque to 57.5 in-lb/6.5 N•m
- 2 Torque to 98.2 in-lb/11.1 N•m
- 3 Anaerobic adhesive

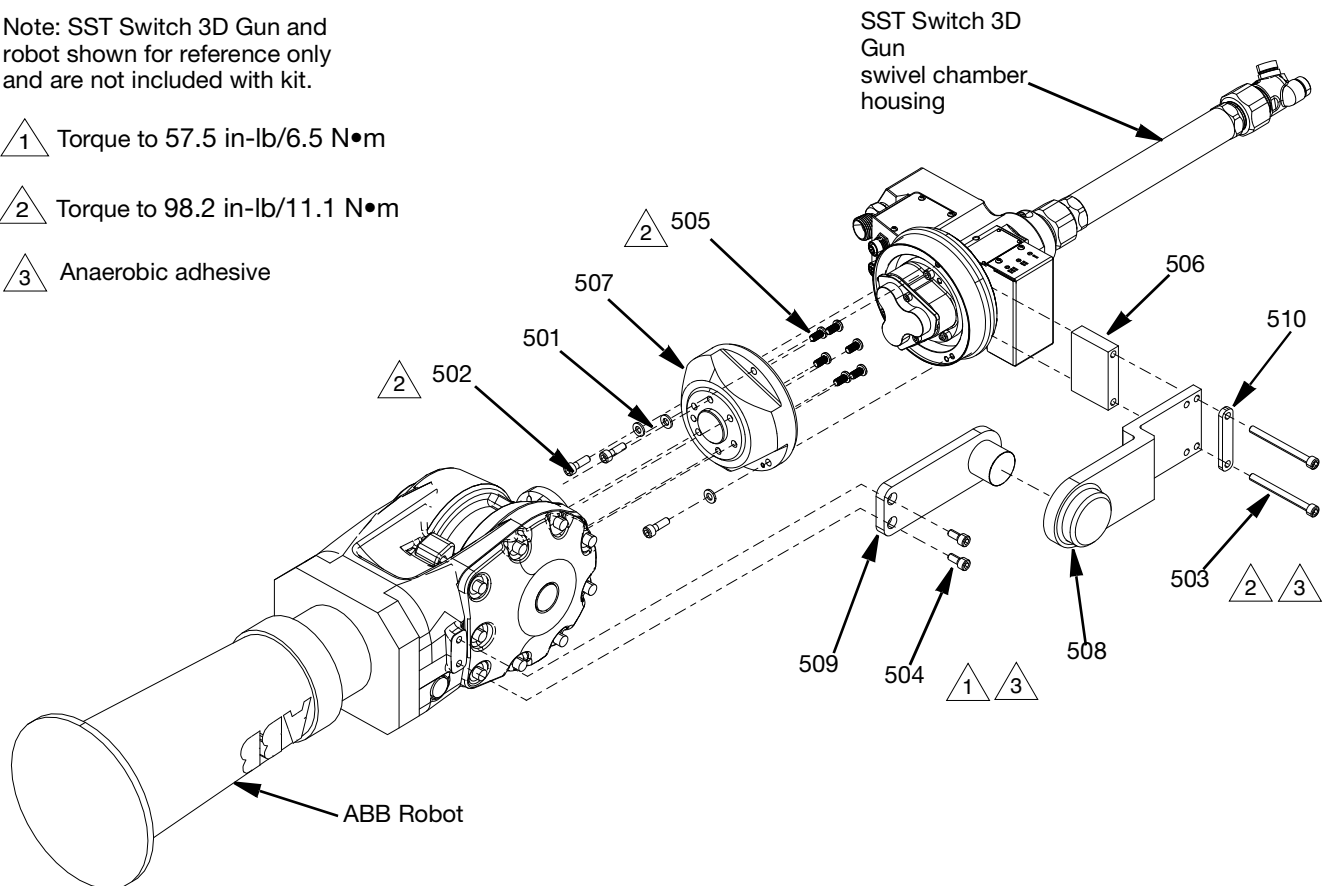


FIG. 5

Parts for ABB Mounting Installation Kit, 25U455

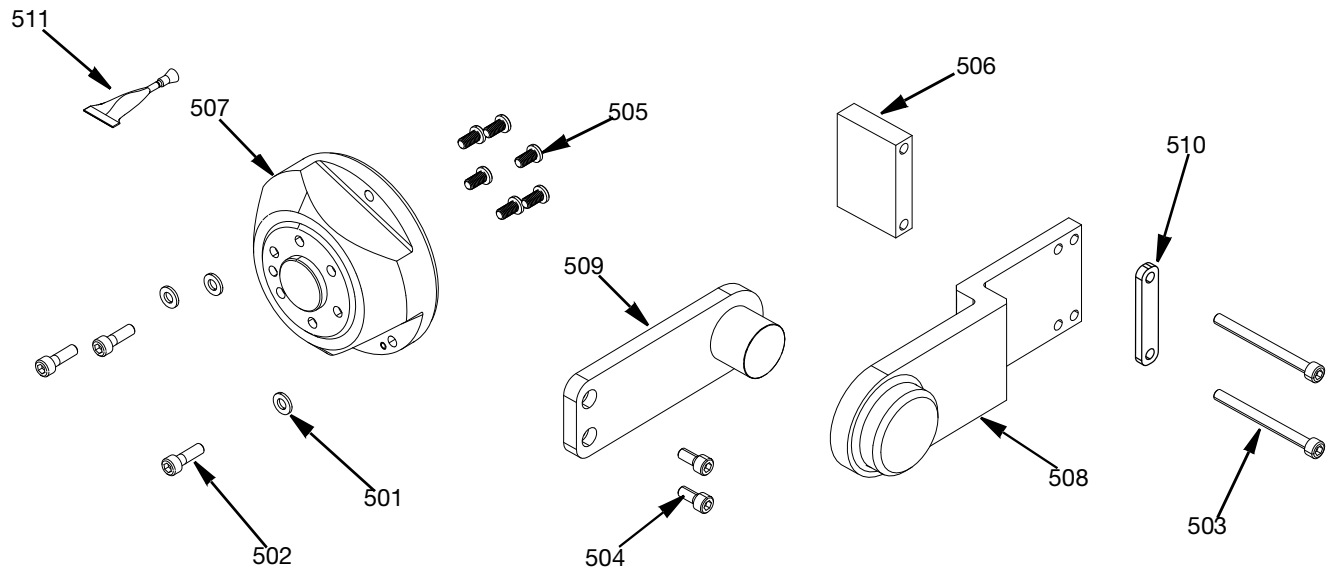


ABB Robot Mounting Installation Kit, 25U455 Parts List

Ref.	Part	Description	Qty.
501	105314	WASHER, plain	5
502	117029	SCREW, cap, SCH	3
503	117083	SCREW, SCH, M6 x 1.0 x 60	2
504	121518	SCREW, cap, SCH	2
505	132906	SCREW, SCHS, M6 x 12	6
506	15N129	BLOCK, ant-rotation	1
507	25U456	ADAPTER, ABB assy	1
508	25U550	BRACKET, gun, ABB	1
509	25U551	BRACKET, robot, ABB	1
510	15N354	WASHER, bar	1
511	113500	ADHESIVE, anaerobic	1

Switch 3D Gun Installation for ABB Robot 25T598

NOTE: This kit can be used only with the (Aluminum) Switch 3d Gun. See **Kits** table page 3.

Mounting Flange

1. Attach the robot mounting adapter (601) onto the sixth axis of the robot with the six M6 x 12 screws (607). Torque to 98.2 in-lb/11.1 N•m.
2. Attach the body of the Switch 3D Gun to the robot mounting adapter (601) using the three M6 x 20 hex socket screws (606) and three plain washers (605). Torque to 98.2 in-lbs (11.1 N•m).

Anti-Rotation Brackets

1. Follow instructions from **Calibration Kit for ABB Robot 26D485** on page 16 to install ABB robot bracket (604) and SHC cap screws (609).

2. Assemble the anti-rotation block (602), ABB gun bracket (603), and washer bar (610) to the SST switch 3D gun, using two M6 x 70 screws (608). Do not tighten the screws.
3. Line up the trunnion of the ABB robot bracket (604), with the bearing of the ABB gun bracket (603) and fit together lining up the fixation points of the assembly.
4. Tighten the two M6 x 70 screws (608) gradually to allow the assembly to find a relaxed position. Then torque to 57.5 in-lb/6.5 N•m.

Note: Switch 3D Gun and robot shown for reference only and are not included with kit.

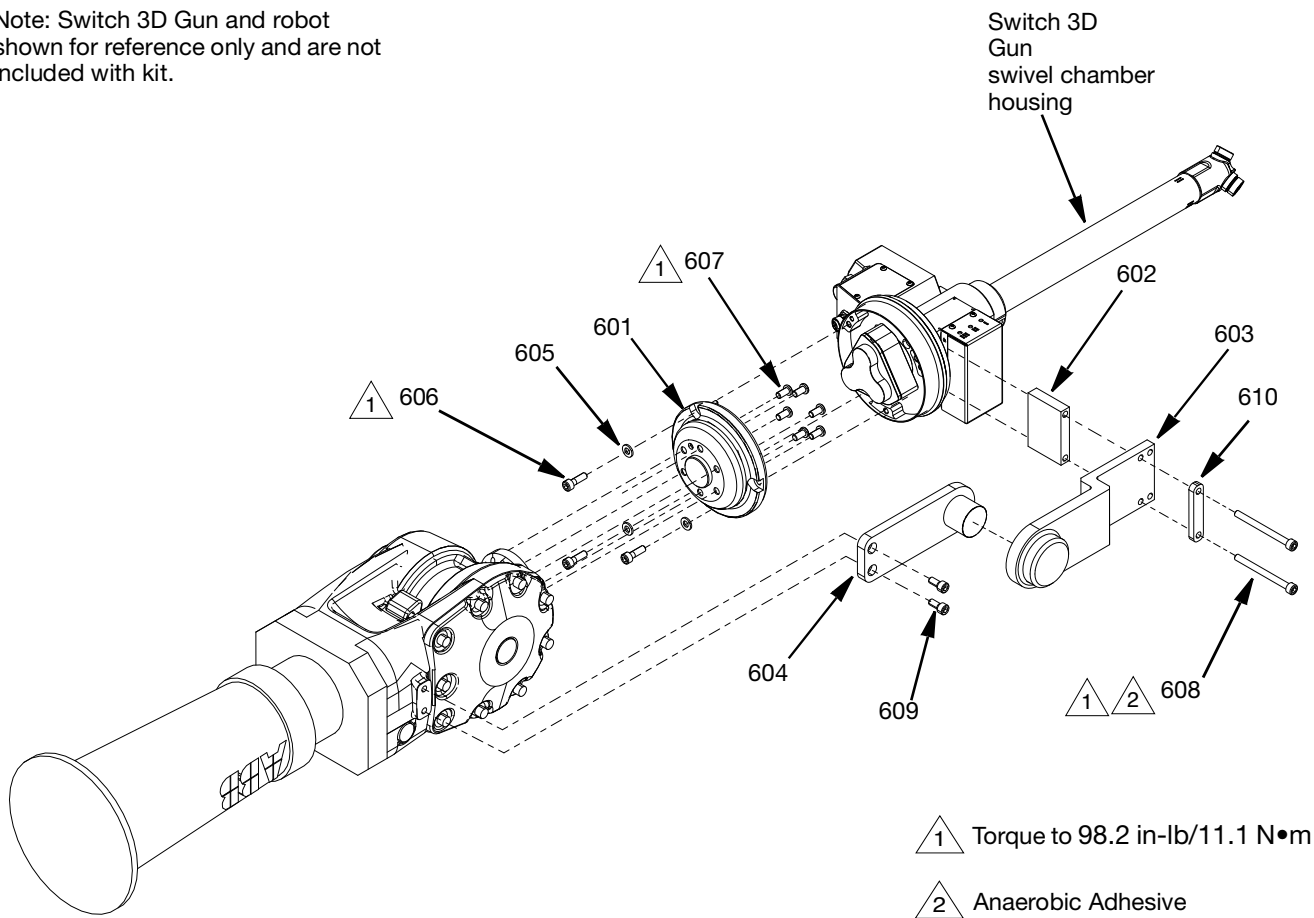


FIG. 6

Parts for ABB Robot Mounting Installation Kit, 25T598

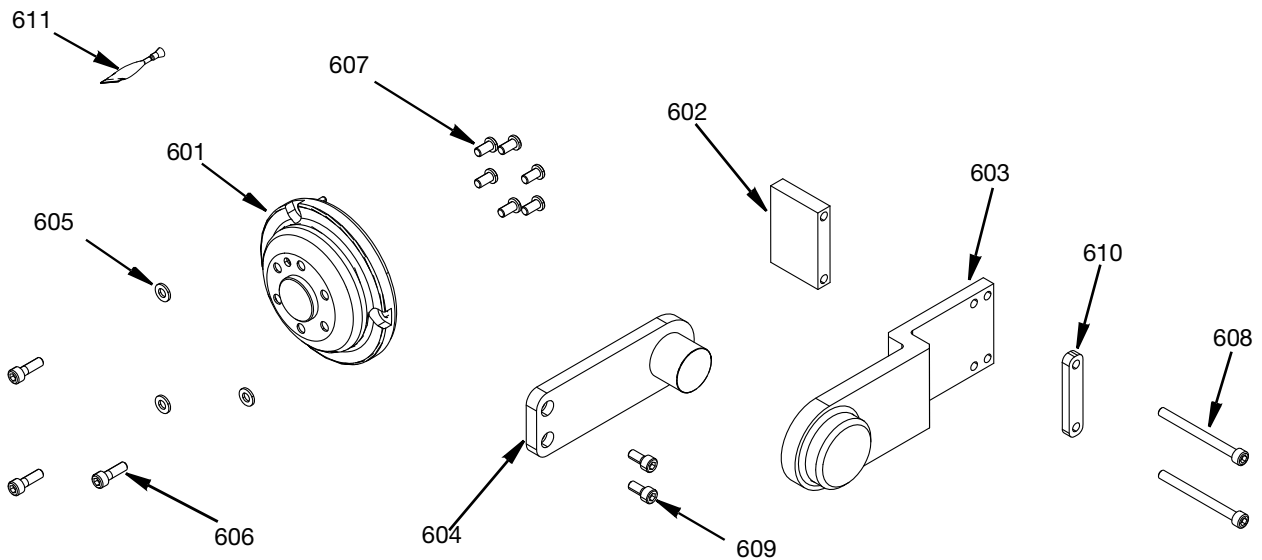


ABB Robot Mounting Installation Parts List

Ref.	Part	Description	Qty.
601	25T601	ADAPTER, robot, mount	1
602	15N129	BLOCK, Anti-rotation	1
603	25U550	BRACKET, gun, ABB	1
604	25U551	BRACKET, robot, ABB	1
605	105314	WASHER, plain	3
606	112556	SCREW, cap, sch	3
607	132906	SCRW, sch, M6 x 12	6
608	117083	SCREW, M6 x 70	2
609	121518	SCREW, cap, shc	2
610	15N354	PLATE, washer	1
611	113500	ADHESIVE, anaerobic	1

Calibration Kit for ABB Robot 26D485

1. Fasten the ABB calibration bracket (701) on the sixth axis of the robot using SCH cap screws (702) and 6mm dowel pin (704). See FIG. 7.

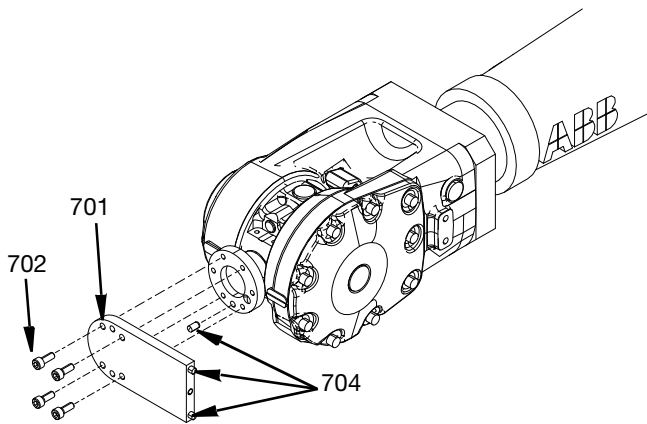


FIG. 7

2. Attach ABB robot bracket (509/604) to the robot using screws (504/609). Do not tighten the screws. See FIG. 8.

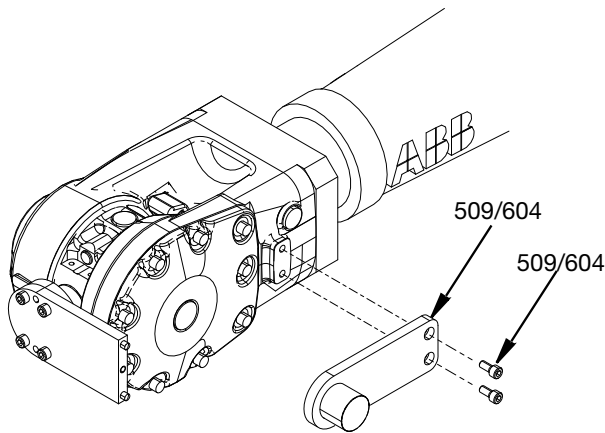


FIG. 8

3. Put the ABB axis calibration bracket (703) in place without forcing it by putting the trunnion of the ABB robot bracket (509/604) through the hole. Align using 6 mm dowel pins (704) and tighten SCH cap screw (702).

4. Tighten screws (504/609) on the frame. Torque to 98.2 in-lbs (11.1 N•m). See FIG. 9.

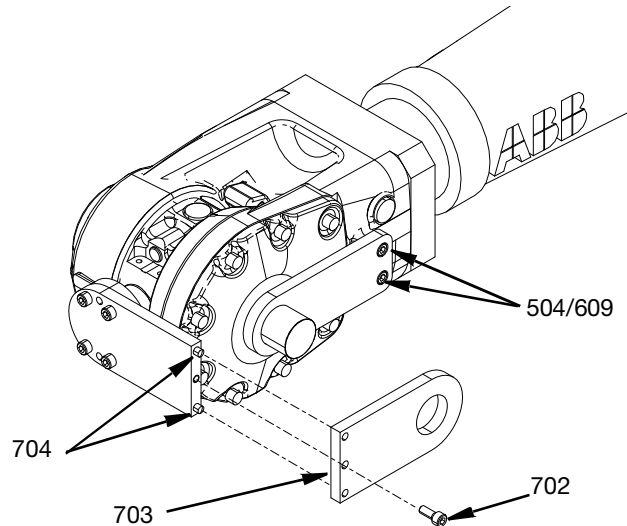


FIG. 9

5. Remove the calibration brackets. See FIG. 10. The robot bracket is now calibrated and the applicator can be installed. Follow the assembly instructions for **SST Switch 3D Gun Installation for 25U455 ABB Robot** page 12 or **Switch 3D Gun Installation for ABB Robot 25T598** page 14.

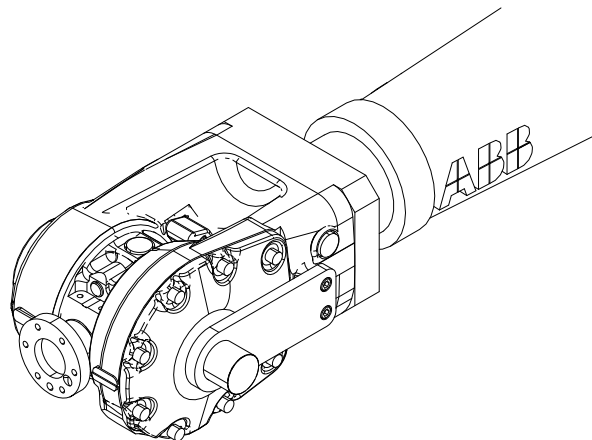
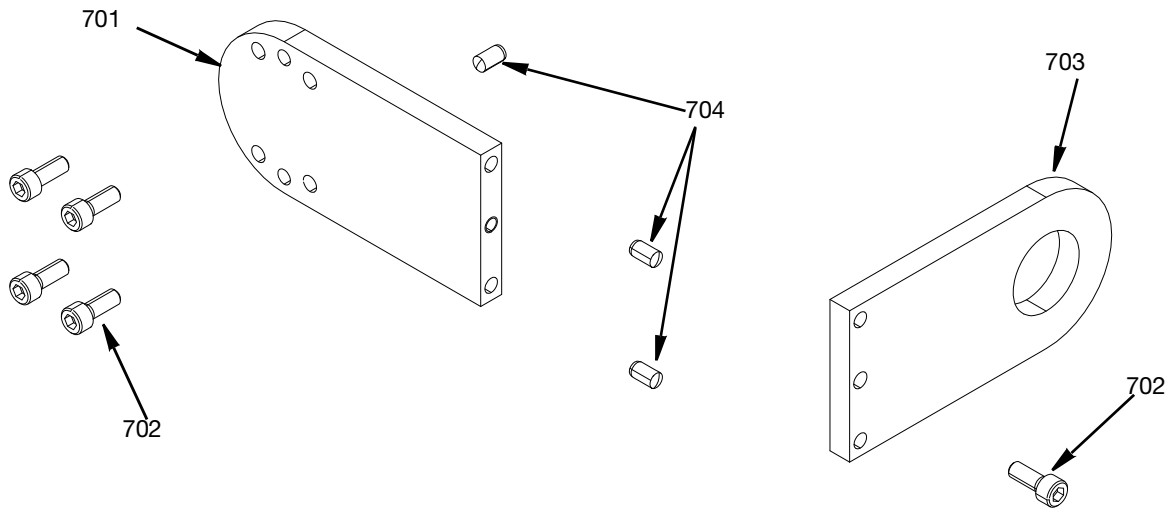


FIG. 10

Parts for Calibration Kit for ABB Robot 26D485



Calibration Kit for ABB Robot 26D485 Parts List

Ref.	Part	Description	Qty.
701	15N483	BRACKET, calibration, ABB	1
702	108288	SCREW, cap, SCH	5
703	15N484	BRACKET, calibration, axis, ABB	1
704	132903	PIN, dowel, 6mm dia x 12 mm lg	3

SST Switch 3D Gun Installation for Kawasaki RS010N 10 kg. Robot, 26D453

NOTE: This kit can be used for both the SST Switch 3D Gun and the (Aluminum) Switch 3D Gun. See **Kits** page 3.

Mounting Flange

1. Attach the Kawasaki 10 kg adapter (801) onto the sixth axis of the robot with the six M6 x 12 screws (802). Torque to 98.2 in-lbs (11.1 N•m).
2. Attach the body of the SST Switch 3D Gun to the Kawasaki 10 kg adapter (801) using the three M6 x 20 hex socket screws (804) and three plain washers (803). Torque to 98.2 in-lbs (11.1 N•m).

Anti-Rotation Brackets

1. Follow instructions from **Calibration Kit for Kawasaki 10 kg Robot 26D486** page 20, to install 10 kg anti rotation bracket (810) using M5 x 16 SCHS screws (812).

2. Follow instructions from **Calibration Kit for Kawasaki 10 kg Robot 26D486** page 20 to install axis anti rotation plate (809) using M6 x 14 SHC cap screws (811).
3. Assemble the anti-rotation block (805), axis anti rotation bracket (806), and washer plate (807) to the SST Switch 3D Gun using two M6 x 70 screws (808). Do not tighten screws.
4. Line up the trunnion of the axis anti rotation plate (809) with the bearing of the axis anti rotation bracket (806) and fit together while lining up the fixation points of the assembly.
5. Tighten the two M6 x 70 screws (808) gradually to allow the assembly to find a relaxed position. Torque to 98.2 in-lbs (11.1 N•m).

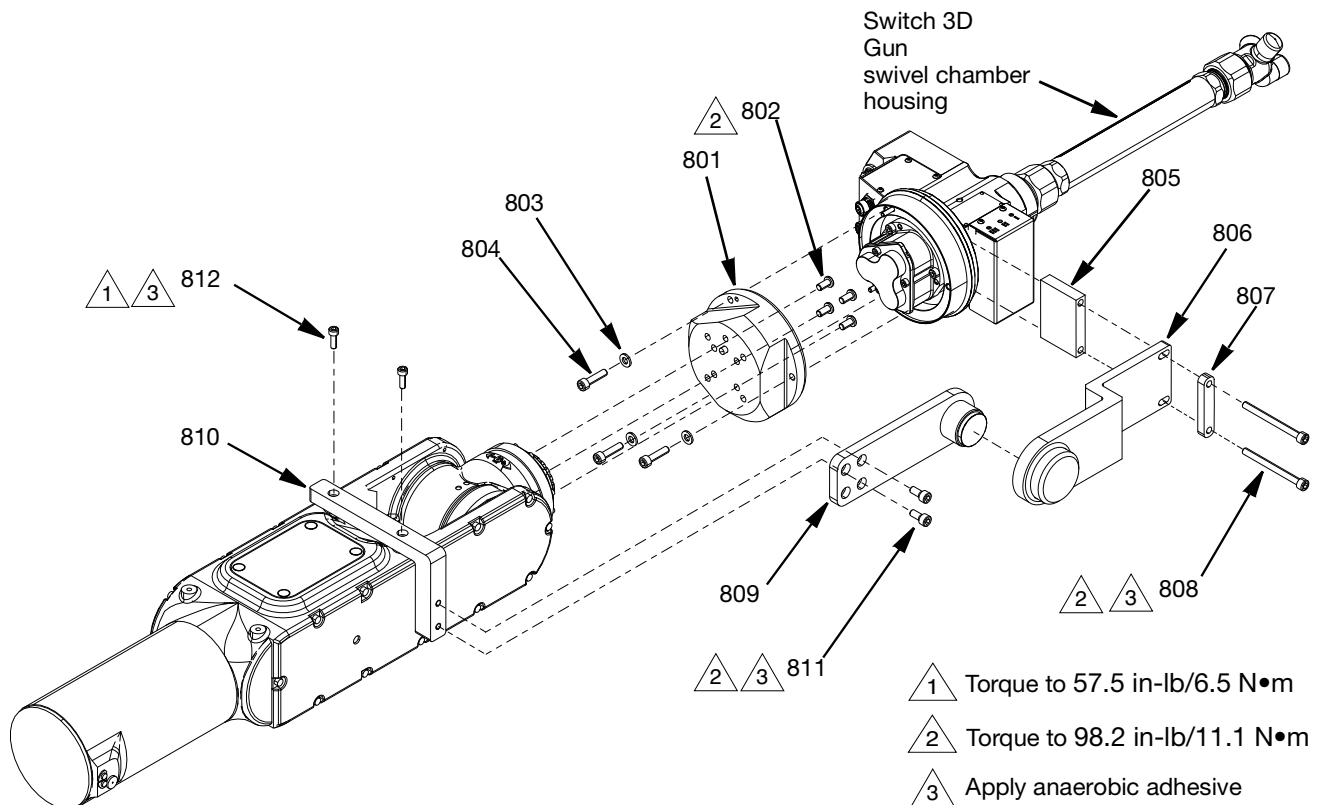
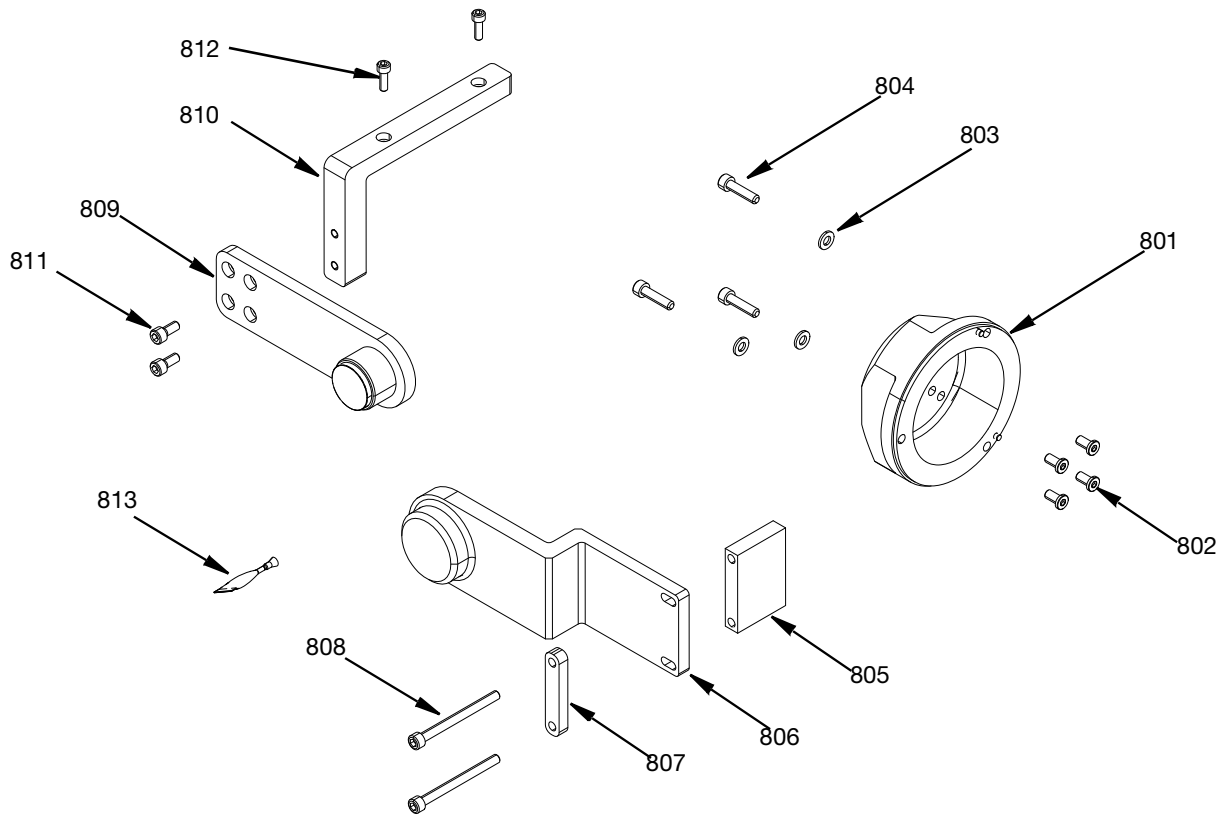


FIG. 11

Parts for Kawasaki RS010N 10 Kg Robot Mounting Installation Kit, 26D453



Kawasaki RS010N 10 Kg Robot Mounting Installation Kit 26D453 Parts List

Ref.	Part	Description	Qty.
801	26D448	ADAPTER, Kawasaki, 10 kg	1
802	132906	SCREW, SCHS, M6 x 12	4
803	105314	WASHER, plain	3
804	117029	SCREW, SHCS, M6 x 25	3
805	15N129	BLOCK, anti-rotation	1
806	26D451	BRACKET, axis, anti-rotation, assy	1
807	15N354	PLATE, washer	1
808	117083	SCREW, SHCS, M6 x 70	2
809	26D452	PLATE, axis, anti-rotation, assy	1
810	15N467	BRACKET, anti-rotation, 10kg	1
811	121518	SCREW, cap, SHC, M6 x 14	2
812	117126	SCREW, SHCS, M5 x 16	2
813	113500	ADHESIVE, anerobic	1

Calibration Kit for Kawasaki 10 kg Robot 26D486

1. Fasten the Kawasaki 10 kg calibration bracket (901) on the sixth axis of the robot using SCH cap screws (902) and 6mm dowel pin (904). See FIG. 12.

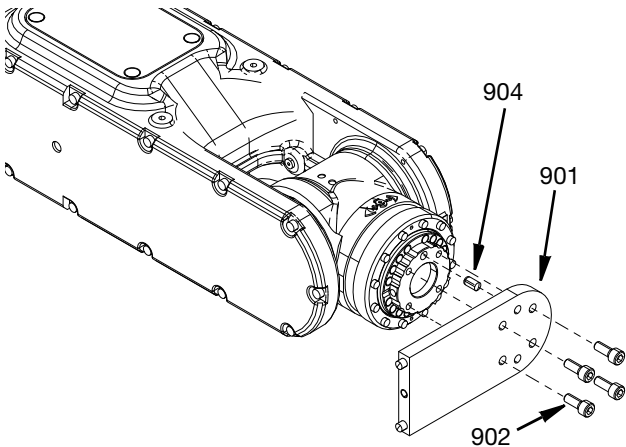


FIG. 12

2. Attach the 10 kg anti rotation bracket (810) to the robot using M5 x 12 screws (812). Do not tighten the screws. See FIG. 13.

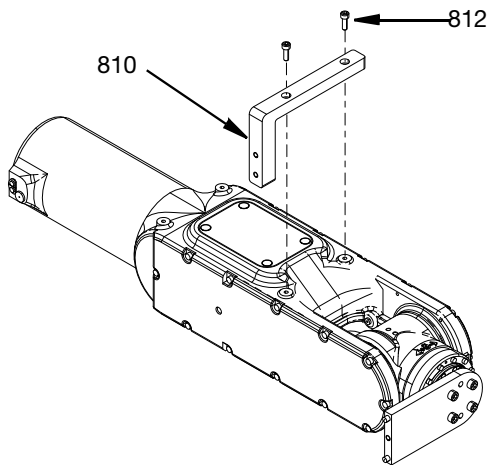


FIG. 13

3. Attach anti rotation axis plate (809) to the Kawasaki 10 kg anti rotation bracket (810) with M6 x 14 SCH cap screws (811) using the two front holes as shown in FIG. 14. Do not tighten screws.
4. Fit the round opening of the 10 kg Kawasaki axis calibration bracket over the trunnion of the anti

rotation axis plate (809) and align using the 6mm dia x 12 mm lg dowel pins and tighten SCH cap screw (902). Torque to 98.2 in-lbs (11.1 N•m).

5. After parts are assembled, Torque M5 x 12 screws (812) to 57.5 in-lbs (6.5 N•m) and M6 x 14 SHC cap screws (811) to Torque to 98.2 in-lbs (11.1 N•m). See FIG. 14.

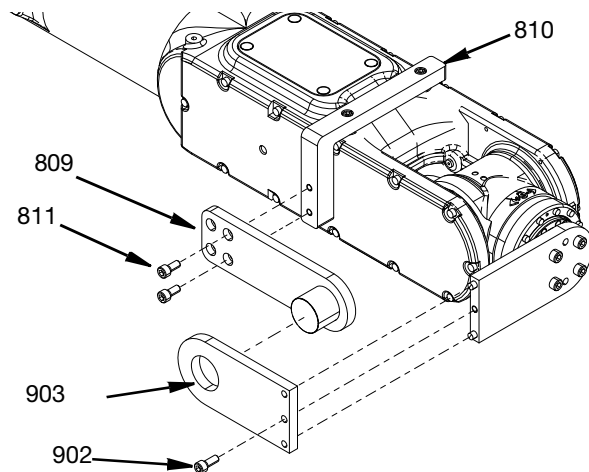


FIG. 14

6. Remove the calibration brackets. See FIG. 15. The robot bracket is now calibrated and the applicator can be installed. Follow the assembly instructions for **SST Switch 3D Gun Installation for Kawasaki RS010N 10 kg. Robot, 26D453** page 18 .

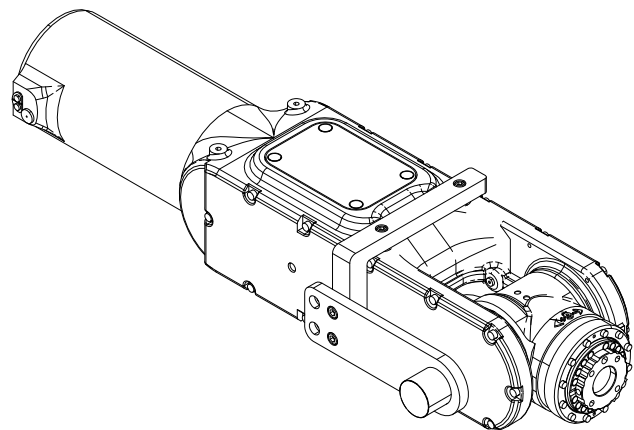
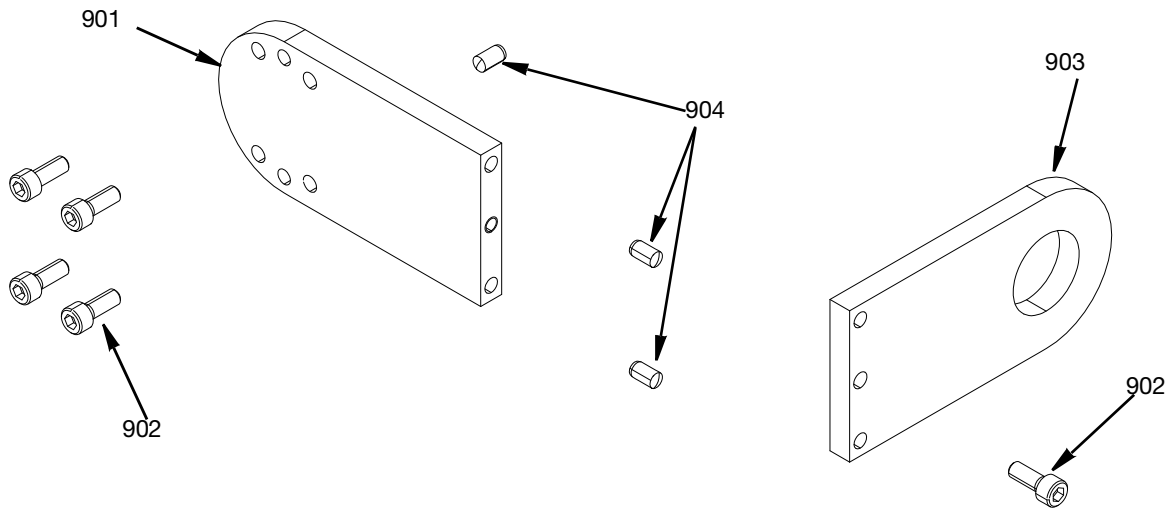


FIG. 15

Parts for Calibration Kit for Kawasaki 10 kg 26D486



Calibration Kit for Kawasaki 10 kg 26D486 Parts List

Ref.	Part	Description	Qty.
901	15N485	BRACKET, calibration, Kawasaki,10kg	1
902	108288	SCREW, cap, SCH	5
903	15N486	BRACKET, calibration, axis, Kawasaki,10kg	1
904	132903	PIN, dowel, 6mm dia x 12 mm lg	3

SST Switch 3D Gun Installation for Kawasaki RS020N 20 kg. Robot, 26D454

NOTE: This kit can be used for both the SST Switch 3D Gun and the (Aluminum) Switch 3D Gun. See **Kits** page 3.

Mounting Flange

1. Attach the Kawasaki 20 kg adapter (1001) onto the sixth axis of the robot with the six M6 x 12 screws (1002). Torque to 98.2 in-lbs (11.1 N•m).
2. Attach the body of the SST Switch 3D Gun to the Kawasaki 20 kg adapter (1001) using the three M6 x 20 hex socket screws (1004) and three plain washers (1003). Torque to 98.2 in-lbs (11.1 N•m).

Anti-Rotation Brackets

1. Follow instructions from **Calibration Kit for 20 kg Kawasaki Robot 26D491** page 24, to install 20 kg anti rotation bracket (1010) using M5 x 16 SCHS screws (1012).

2. Follow instructions from **Calibration Kit for 20 kg Kawasaki Robot 26D491** page 24 to install axis anti rotation plate (1009) using M6 x 14 SHC cap screws (1011).
3. Assemble the anti-rotation block (1005), axis anti rotation bracket (1006), and washer plate (1007) to the SST Switch 3D Gun using two M6 x 70 screws (1008). Do not tighten screws.
4. Line up the trunnion of the axis anti rotation plate (1009) with the bearing of the axis anti rotation bracket (1006) and fit together while lining up the fixation points of the assembly.
5. Tighten the two M6 x 70 screws (1008) gradually to allow the assembly to find a relaxed position. Torque to 98.2 in-lbs (11.1 N•m).

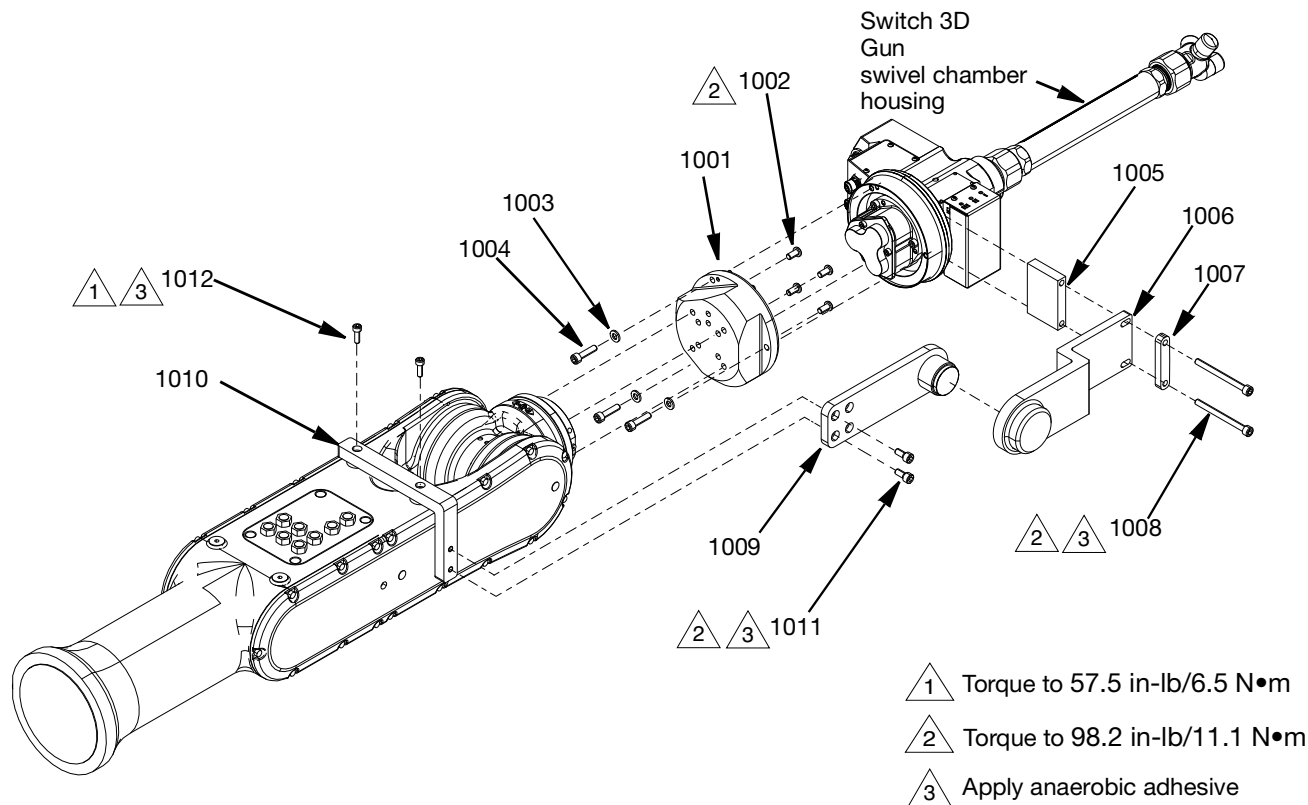
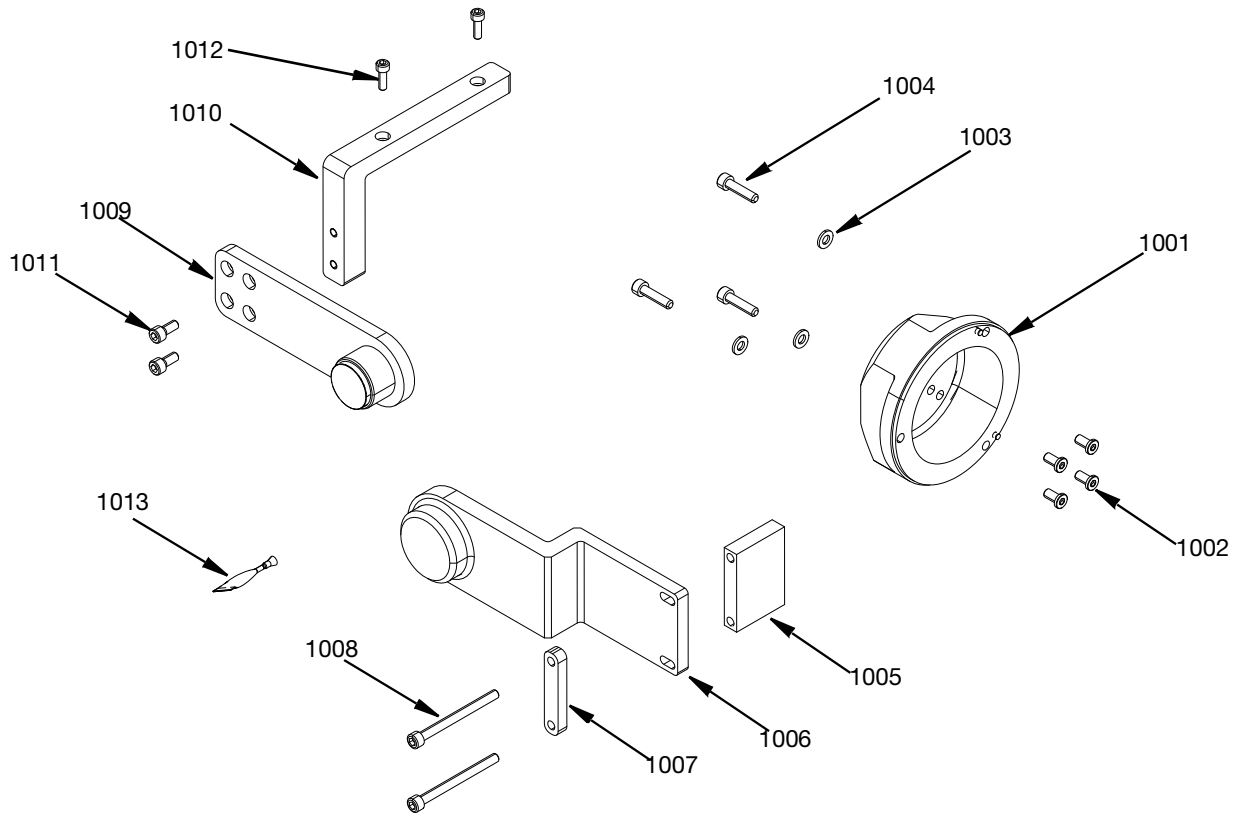


FIG. 16

Parts for Kawasaki RS020N 20 Kg Robot Mounting Installation Kit, 26D454



Kawasaki RS020N 20 Kg Robot Mounting Installation Kit 26D454 Parts List

Ref.	Part	Description	Qty.
1001	26D449	ADAPTER, Kawasaki, 20 kg	1
1002	132906	SCREW, SCHS, M6 x 12	4
1003	105314	WASHER, plain	3
1004	117029	SCREW, SHCS, M6 x 25	3
1005	15N129	BLOCK, anti-rotation	1
1006	26D451	BRACKET, axis, anti-rotation, assy	1
1007	15N354	PLATE, washer	1
1008	117083	SCREW, SHCS, M6 x 70	2
1009	26D452	PLATE, axis, anti-rotation, assy	1
1010	15N468	BRACKET, anti-rotation, 20kg	1
1011	121518	SCREW, cap, SHC, M6 x 14	2
1012	117126	SCREW, SHCS, M5 x 16	2
1013	113500	ADHESIVE, anerobic	1

Calibration Kit for 20 kg Kawasaki Robot 26D491

1. Fasten the Kawasaki 20 kg calibration bracket (1101) on the sixth axis of the robot using SCH cap screws (1102) and 6mm dowel pin (1104). See FIG. 17.

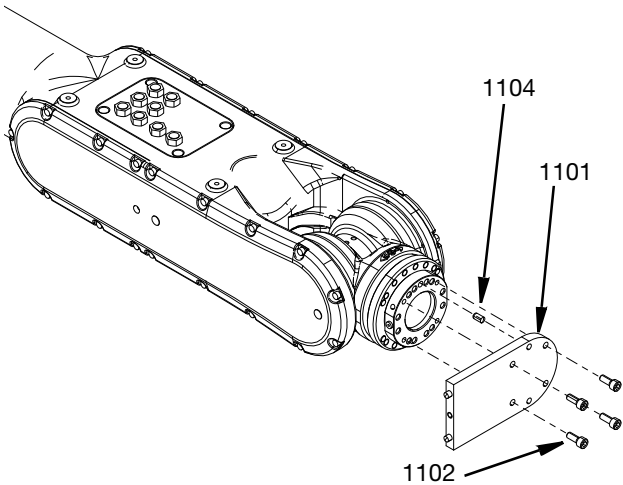


FIG. 17

2. Attach the 20 kg anti rotation bracket (1010) to the robot using M5 x 12 screws (1012). Do not tighten the screws. See FIG. 18.

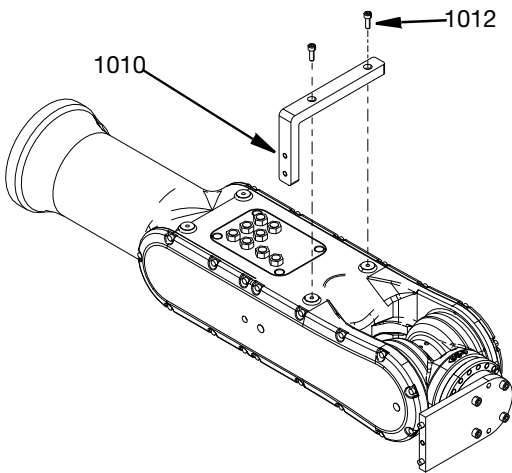


FIG. 18

3. Attach anti rotation axis plate (1009) to the Kawasaki 20 kg anti rotation bracket (1010) with M6 x 14 SCH cap screws (1011). Use the two front holes as shown in FIG. 19. Do not tighten screws.
4. Fit the round opening of the 20 kg Kawasaki axis calibration bracket (1103) over the trunnion of the

anti rotation axis plate (1011) and align using the 6mm dia x 12 mm lg dowel pins and tighten SCH cap screw (1102). Torque to 98.2 in-lbs (11.1 N•m).

5. After parts are assembled, Torque M5 x 12 screws (1012) to 57.5 in-lbs (6.5 N•m) and M6 x 14 SHC cap screws (1011) to Torque to 98.2 in-lbs (11.1 N•m). See FIG. 19.

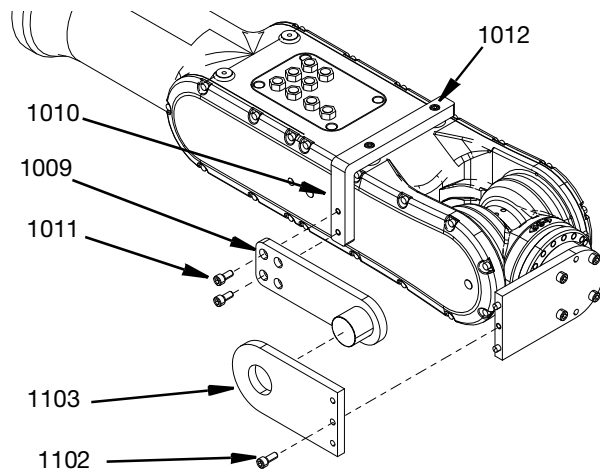


FIG. 19

- 6.
7. Remove the calibration brackets. See FIG. 20. The robot bracket is now calibrated and the applicator can be installed. Follow the assembly instructions for **SST Switch 3D Gun Installation for Kawasaki RS020N 20 kg. Robot, 26D454** page 22 .

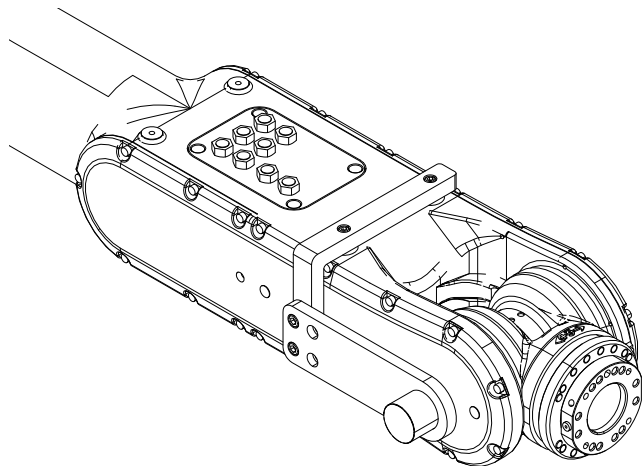
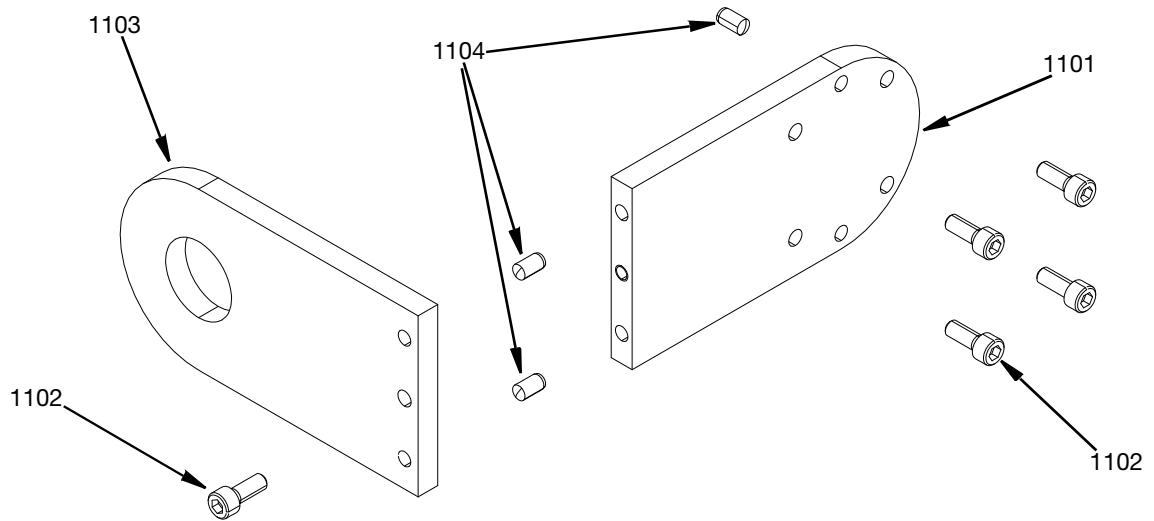


FIG. 20

Parts for Calibration Kit for 20 kg Kawasaki 26D491



Calibration Kit for ABB Robot 26D491 Parts List

Ref.	Part	Description	Qty.
1101	15N487	BRACKET, calibration, Kawasaki,20kg	1
1102	108288	SCREW, cap, SCH	5
1103	15N488	BRACKET, calibration, axis, Kawasaki,20kg	1
1104	132903	PIN, dowel, 6mm dia x 12 mm lg	3

Recycling and Disposal

End of Product Life

At the end of a product's useful life, recycle it in a responsible manner.

Technical Specifications

Torque Requirement		
M 4, Screw	23 in-lb	2.6 N•m
M 5, Screw	57.5 in-lb	6.5 N•m
M 6, Screw	98.2 in-lb	11.1 N•m
M 8, Screw	350 in-lb	39.5 N•m

California Proposition 65

CALIFORNIA RESIDENTS

 **WARNING:** Cancer and reproductive harm – www.P65warnings.ca.gov.

Graco Standard Warranty

Graco warrants all equipment referenced in this document which is manufactured by Graco and bearing its name to be free from defects in material and workmanship on the date of sale to the original purchaser for use. With the exception of any special, extended, or limited warranty published by Graco, Graco will, for a period of twelve months from the date of sale, repair or replace any part of the equipment determined by Graco to be defective. This warranty applies only when the equipment is installed, operated and maintained in accordance with Graco's written recommendations.

This warranty does not cover, and Graco shall not be liable for general wear and tear, or any malfunction, damage or wear caused by faulty installation, misapplication, abrasion, corrosion, inadequate or improper maintenance, negligence, accident, tampering, or substitution of non-Graco component parts. Nor shall Graco be liable for malfunction, damage or wear caused by the incompatibility of Graco equipment with structures, accessories, equipment or materials not supplied by Graco, or the improper design, manufacture, installation, operation or maintenance of structures, accessories, equipment or materials not supplied by Graco.

This warranty is conditioned upon the prepaid return of the equipment claimed to be defective to an authorized Graco distributor for verification of the claimed defect. If the claimed defect is verified, Graco will repair or replace free of charge any defective parts. The equipment will be returned to the original purchaser transportation prepaid. If inspection of the equipment does not disclose any defect in material or workmanship, repairs will be made at a reasonable charge, which charges may include the costs of parts, labor, and transportation.

THIS WARRANTY IS EXCLUSIVE, AND IS IN LIEU OF ANY OTHER WARRANTIES, EXPRESS OR IMPLIED, INCLUDING BUT NOT LIMITED TO WARRANTY OF MERCHANTABILITY OR WARRANTY OF FITNESS FOR A PARTICULAR PURPOSE.

Graco's sole obligation and buyer's sole remedy for any breach of warranty shall be as set forth above. The buyer agrees that no other remedy (including, but not limited to, incidental or consequential damages for lost profits, lost sales, injury to person or property, or any other incidental or consequential loss) shall be available. Any action for breach of warranty must be brought within two (2) years of the date of sale.

GRACO MAKES NO WARRANTY, AND DISCLAIMS ALL IMPLIED WARRANTIES OF MERCHANTABILITY AND FITNESS FOR A PARTICULAR PURPOSE, IN CONNECTION WITH ACCESSORIES, EQUIPMENT, MATERIALS OR COMPONENTS SOLD BUT NOT MANUFACTURED BY GRACO. These items sold, but not manufactured by Graco (such as electric motors, switches, hose, etc.), are subject to the warranty, if any, of their manufacturer. Graco will provide purchaser with reasonable assistance in making any claim for breach of these warranties.

In no event will Graco be liable for indirect, incidental, special or consequential damages resulting from Graco supplying equipment hereunder, or the furnishing, performance, or use of any products or other goods sold hereto, whether due to a breach of contract, breach of warranty, the negligence of Graco, or otherwise.

FOR GRACO CANADA CUSTOMERS

The Parties acknowledge that they have required that the present document, as well as all documents, notices and legal proceedings entered into, given or instituted pursuant hereto or relating directly or indirectly hereto, be drawn up in English. Les parties reconnaissent avoir convenu que la rédaction du présente document sera en Anglais, ainsi que tous documents, avis et procédures judiciaires exécutés, donnés ou intentés, à la suite de ou en rapport, directement ou indirectement, avec les procédures concernées.

Graco Information

Sealant and Adhesive Dispensing Equipment

For the latest information about Graco products, visit www.graco.com.

For patent information, see www.graco.com/patents.

TO PLACE AN ORDER, contact your Graco distributor, go to www.graco.com, or call to identify the nearest distributor.

If calling from the USA: 1-800-746-1334

If calling from outside the USA: 0-1-330-966-3000

All written and visual data contained in this document reflects the latest product information available at the time of publication. Graco reserves the right to make changes at any time without notice.

Original instructions. This manual contains English. MM 3A8066

Graco Headquarters: Minneapolis

International Offices: Belgium, China, Japan, Korea

GRACO INC. AND SUBSIDIARIES • P.O. BOX 1441 • MINNEAPOLIS MN 55440-1441 • USA
Copyright 2020, Graco Inc. All Graco manufacturing locations are registered to ISO 9001.

www.graco.com
Revision D, January 2022